



# BIKELOK

## 2021

  
**240** | YEARS  
OF LOCKMAKING EXCELLENCE

*Toughness guaranteed*



## Presenting Bikelok

Cycling has never been so popular.

The pandemic has seen more bikes out and about than ever, but cycle theft is on the increase.

Targeted crime is a serious problem. And the importance of 'at home' security has never been greater.

We're proud to offer the very best in cycle security with our specialist Bikelok range, our most convenient and easy to use cycle locks yet. Squire has been making cycle locks since the 1960s and we have a passion for it.

We've drawn on extensive research and development to create our widest choice of Sold Secure rated security for every cyclist, for exercise, recreation, commuting and sport.

From cable locks, D-locks, padlock and chain sets, to combination locks, at home security and our new Inigma smart bike locks, the first bike locks to achieve the BSI Kitemark for Internet of Things (Residential).

We've updated our catalogue to include all the latest advancements.

If you'd like to know more, please contact us, we're happy to help.

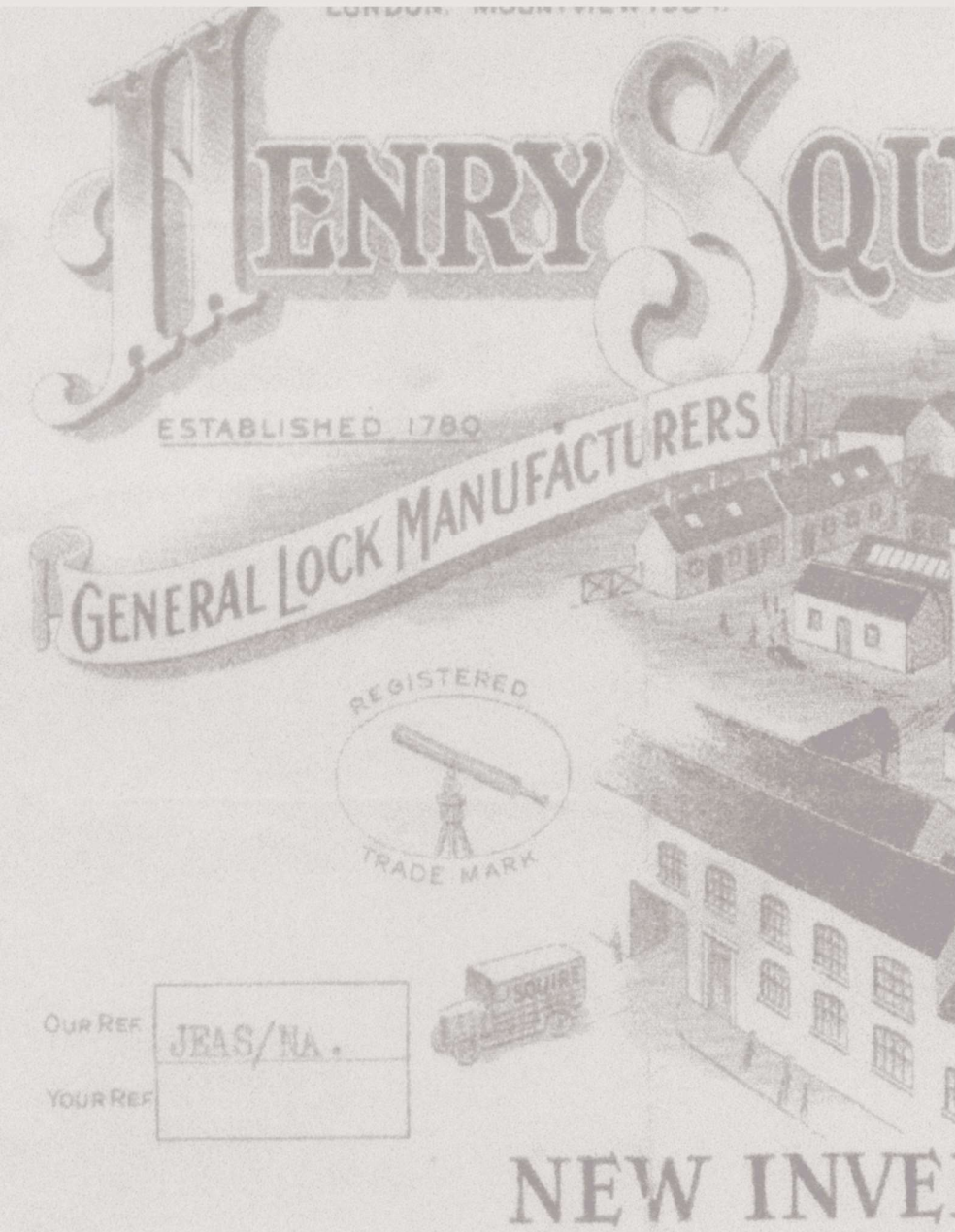
*John Squire*

CEO - 8<sup>th</sup> Generation



**240** | YEARS

OF LOCKMAKING EXCELLENCE



OUR REF. JEAS/NA.  
YOUR REF.

## Contents

Introduction	2
Quality marks, approvals and certifications	4
Overview - Sport, Urban, Leisure	4
New for 2021	5
Inigma	6
Stronghold®	8
Straplocks	10
E-bikes	12
Sport - Introduction	16
Sport - Snaplok™	17
Urban - Introduction	18
Urban - FOLDA	20
Urban - HAMMERHEAD™ D-locks	22
Urban - EIGER™ D-locks	24
Urban - MAKO™ cables and integrated chains	26
Urban - Framelock	28
Leisure - Introduction	30
Leisure - MAKO™ cables and chains	31
Leisure - KILDA	34
Home - Introduction	38
Home - ground and wall anchors	39
Home - garage security	40
Home - hasp and staples	41

*Lockmakers Since 1780*

## Quality and testing

### BSI Kitemark certifications

The famous BSI Kitemark is recognised worldwide as the ultimate mark of quality, safety and trust.

We're the first organisation to achieve BSI Kitemark for Internet of Things (Residential) for a bike lock.

Our Inigma cycle security range (see page 5) bears the IoT certification, plus our Inigma operating system carries the Kitemark for IoT Secure Digital Applications.

### Sold Secure attack tested

Many products featured in our catalogue are Sold Secure approved. Most bear the Silver or Gold quality mark. That means they've gone through rigorous attack testing by Sold Secure, the premier British testing and certification body that sets the industry standard for security product testing. Some insurance companies insist on Sold Secure approved products.

### Secured by Design

SBD is the official police security initiative. It's owned by the UK Police Service and focusses on crime prevention through innovative security design. It is the only way for companies to obtain police recognition for security-related products in the UK. SBD works with industry bodies and test houses to create high level security standards. Many Squire cycle locks are SBD approved.

### In-house testing

All our products are rigorously stress-tested until we are satisfied they are strong enough to hold up against even the most determined thieves. Our in-house testing procedures are aligned to the highest security standards and testing guidelines set by Sold Secure and Secured by Design.



## Sport - Urban - Leisure

### How to choose the right lock

Squire's packaging is designed to guide the customer in their choice of bike lock. The locks are divided into categories, SPORT, URBAN and LEISURE. See below for a summary of each of these categories.



### SPORT

#### TYPICAL USE

- At home garage use
- High end sport club, Racers
- Portable

SECURITY RATING  
maximum 8-10

### URBAN

#### TYPICAL USE

- Urban city use
- Heavy use
- Commuters

SECURITY RATING  
maximum 8-10

### LEISURE

#### TYPICAL USE

- Weekend leisure use
- Families

SECURITY RATING  
basic 1-3  
medium 4-8

## New Products for 2021

### inigma™ Smart Bike Locks

Our super-secure range of smartphone operated bike locks. Featuring one of the world's most secure military grade, electronic operating systems. All inigma products are Sold Secure approved and bear the BSI Kitemark for IoT (Residential), the first bike locks to achieve this (see page 6).

### Stronghold® Range - COMING SOON!

Sold Secure Diamond approved, this is our highest rated cycle security yet. Our new **Stronghold®** range features a D-lock, folding lock and integrated lock and chain set. Available from Summer 2021 (see page 8).

### Straplock - COMING SOON!

Introducing our new wearable bike locks. Unique click and release belt-style fastening which adjusts to fit the rider's waist. Lightweight, super-secure, convenient (see page 10).

### FOLDA folding locks

Two new super-lightweight folding locks designed for the urban cyclist. Compact, convenient, easy to carry, FOLDA and FOLDA Mini come with holster and carrying bracket (see page 18).

### FRAMELOCK - COMING SOON!

A new high quality bicycle frame lock – easy to mount and carry. It comes with a plug in chain to extend the locks reach around fixed security points (see page 26).

### KILDA

Our latest range of bike locks for everyday use. Security rated, easy to use, convenient. Choose from cable locks or lock and chain sets with combination or key operated padlocks (see page 32).



inigma™ Smart Locks



Stronghold® Range



Straplock



FOLDA



FRAMELOCK



KILDA

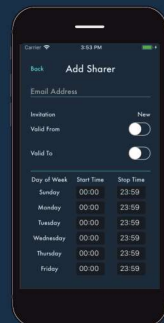
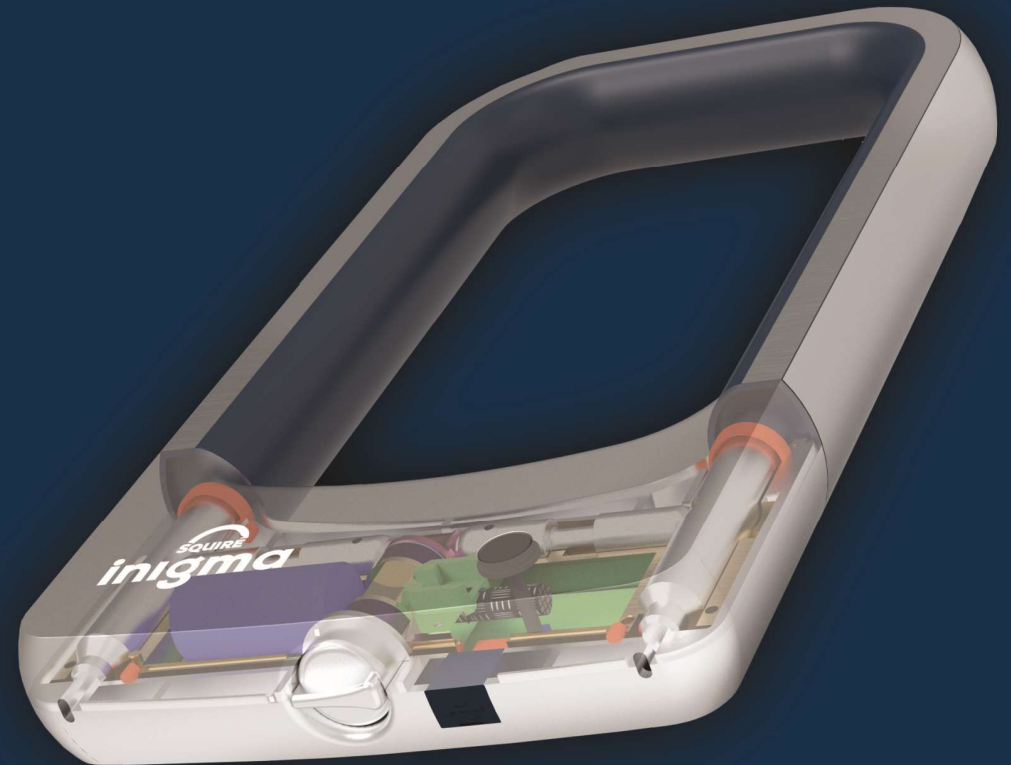
# SQUIRE

# inigma

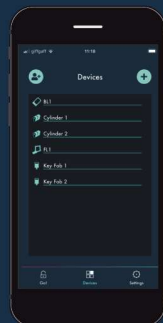
## inigma™ range of smart bike locks

Our super-secure range of smartphone operated bike locks. Featuring one of the world's most secure smart operating systems. The first ever bike locks to achieve the BSI Kitemark for IoT (Residential).

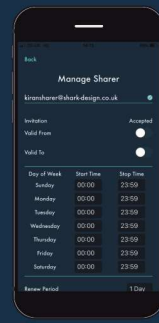
- Smartphone operated
- Keyless locking via Inigma app
- Pair with iOS and Android devices
- Easy to use, click to unlock
- Maximum security military grade AES-256 bit encryption
- Tough aluminium lock body, hardened boron steel shackle
- Share your lock with others, grant remote access easily
- Control multiple locks from your smartphone
- Comprehensive programming and audit trails
- Use Inigma app to operate Inigma door cylinders and padlocks too
- Sold Secure Approved
- Two BSI Kitemarks - Kitemark for IoT (Residential) and Kitemark for secure digital applications.



**Allow access**



**Control multiple locks**



**Give access  
Revoke access**



**Complex  
Audit trail**

**MADE IN  
BRITAIN**

## inigma™ BL1



SOLD SECURE GOLD,  
BSI KITEMARK D-lock

- 12.7mm hardened boron steel shackle
- Aluminium lock body with internal armouring
- Indicator light/wake button
- Release button
- Sold Secure Gold Bicycle Approved
- BSI Kitemarks
- Patented

**Product Code: INIGMA BL1**



**10**  
Security Rating



## inigma™ FL1



SOLD SECURE BRONZE,  
BSI KITEMARK folding lock

- Light weight aluminium lock body with hardened steel casing
- 5mm Hardened steel links
- Synthetic ABS coating on links and lock body prevent damage to bicycle paintwork
- Total length 800mm
- Easy to carry, compact holster, carrying bracket included
- Lock clicks fits into holster
- Indicator light/wake button, Release button
- Sold Secure Bronze Bicycle Approved
- BSI Kitemarks
- Patented

**Product Code: INIGMA FL1**



**8**  
Security Rating



## inigma™ IC1



SOLD SECURE BRONZE,  
BSI KITEMARK integrated lock and chain

- Light weight aluminium lock body with hardened steel casing
- 8mm square hardened alloy steel chain
- 800mm in length
- Indicator light/wake button
- Release button
- Sold Secure Bronze Approved
- BSI Kitemarks
- Patented

**Product Code: INIGMA IC1**



**8**  
Security Rating



## The NEW Stronghold® Range

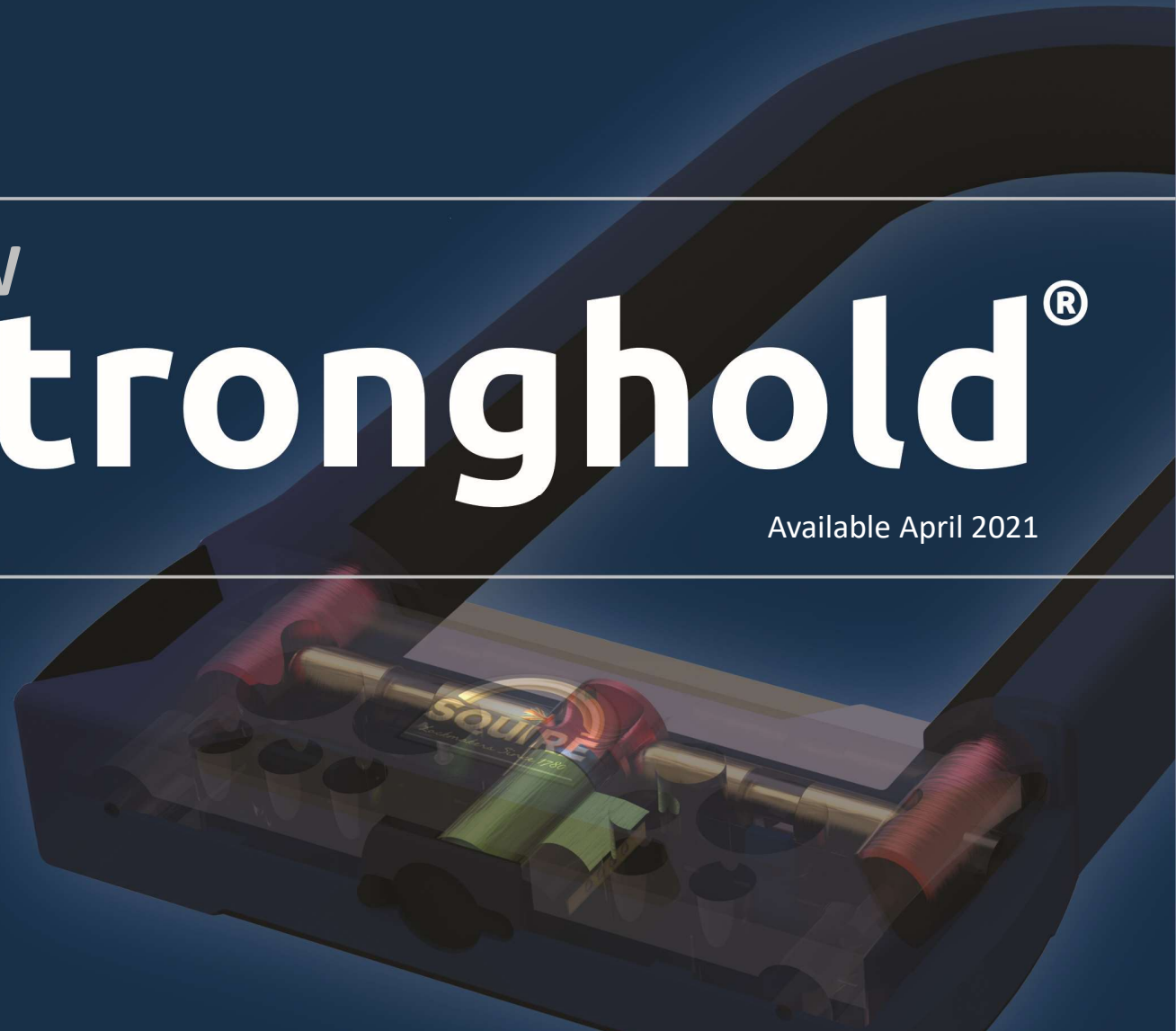
We're taking cycle security to the very highest level. Proudly presenting our new top of the range **Stronghold®** cycle security.

**Stronghold®** is universally recognised as our most trusted maximum security brand. It symbolises our 240-year heritage and stands for the very best in British made locks. Tested and approved to the highest Sold Secure Diamond standards.

# NEW Stronghold®

Available April 2021

- Maximum security Stronghold® D-lock, folding lock or integrated lock and chain set
- Sold Secure Diamond/Gold Bicycle Approved, Secured by Design
- Ultra-secure restricted key system prevents unauthorised duplication of keys
- Precision CNC machined out of solid steel
- Over half a million key differs
- Ideal for e-bikes and high-end bikes
- Made in Britain



Secured by Design



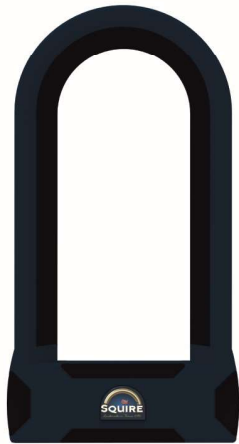
Police Preferred Specification





## Stronghold® D16/230

D-lock



SOLD SECURE DIAMOND BICYCLE  
Approved D-lock

- 16mm Hardened boron steel shackle
- Hardened steel lock body
- 6 pin cylinder, over 500,000 differs
- Restricted key system, personal key card to prevent unauthorised copying
- Sold Secure Motorcycle Gold and Bicycle Diamond Approved

**Product Code: STRONGHOLD D16/230**



**MADE IN  
BRITAIN**



## Stronghold® FL/850

Folding lock



SOLD SECURE GOLD BICYCLE  
Approved folding lock

- Compact, easy to carry
- 5mm Hardened steel links
- Comes with compact holster, carrying bracket included
- Lock is secured in holster with strap
- 6 pin cylinder, over 500,000 differs
- Restricted key system, personal key card to prevent unauthorised copying Sold Secure Bicycle Gold Approved

**Product Code: STRONGHOLD FL/850**



**MADE IN  
BRITAIN**



## Stronghold® IC/850

Integrated lock and chain



SOLD SECURE DIAMOND BICYCLE  
Approved integrated lock and chain

- 10mm square hardened alloy steel chain
- 850mm in length
- Integrated lock body with hardened steel body
- 6 pin cylinder, over 500,000 differs
- Restricted key system, personal key card to prevent unauthorised copying
- Sold Secure Motorcycle Gold and Bicycle Diamond Approved

**Product Code: STRONGHOLD IC/850**



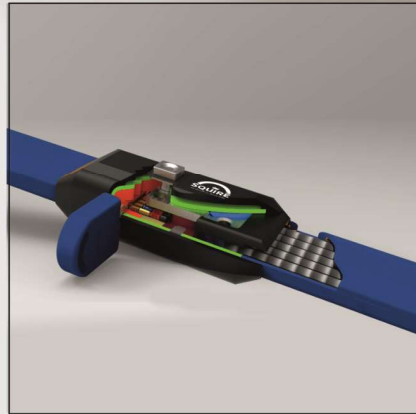
**MADE IN  
BRITAIN**



stronghold

WEARABLE SECURITY

# straplock





Adjustable  
Secure  
Easy to use, lightweight

## straplock 35

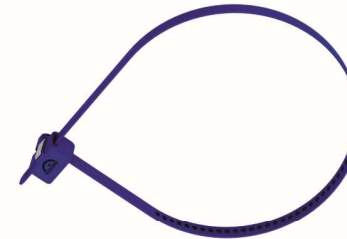


**9**  
Security  
Rating

- Length 800mm. Comes with extender strap as standard for comfortable fit.
- Uses multi-core, multi-cable reinforced strap - resistant to cutting and sawing. Silicone outer layer to strap, comfortable to wear and won't scratch bicycle paintwork.
- Easy click, clip open and close- Insert the key and click the button to open. Insert the key and push the strap into the lock head to close. Then remove key
- Patent applied for lock mechanism

**Product Code:**  
**STRAPLOCK 35**

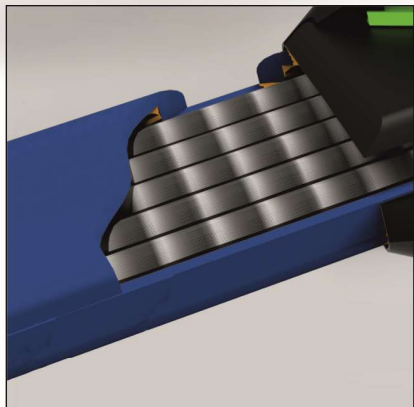
## cafelock 10



**3**  
Security  
Rating

- Length 450mm.
- Armoured stainless steel band
- Easy click, clip open and close Insert the key, press the button and pull the strap to open. Insert the key and push the strap into the lock head to close, tighten around the object as required and remove the key
- Patent applied for lock mechanism
- Versatile locks can also be used to secure bicycles to car bike racks, roof racks etc
- Also ideal for securing other items such as luggage, ladders outside the home, camping equipment etc.
- Designed to deter the opportunist thief

**Product Code:**  
**CAFELOCK 10**



A close-up photograph of an e-bike's motor and drivetrain, showing the motor housing, chain, and disc brake. The image is overlaid with a semi-transparent white box containing text.

# e-bikes

As the popularity of e-bikes or electric bikes soars, so too has the price range.

Latest statistics show how valuable e-bikes are a prime target for thieves.

That makes it essential to have tried and tested security.

Always choose the best Sold Secure Approved locks for high value e-bikes.

Some insurers will insist on it.

Our range of highest security lock and chain sets are designed to offer the very best protection.

## Recommended for e-bikes



### Stronghold® SS65CS/TC4

- 14mm diameter hardened boron alloy steel chain
- 1200mm length chain
- 65mm solid hardened steel body padlock with hardened boron steel shackle
- 6 pin tumbler anti-pick lock mechanism over 250,000 key differs
- Anti-corrosion finish

**Product Code:**  
**SS65CS/TC4**



Security Rating



### Stronghold® SS50S/G3

- 10mm diameter hardened boron alloy steel chain
- 900mm length chain
- 50mm solid hardened steel body padlock with hardened boron steel shackle
- 6 pin tumbler anti-pick lock mechanism over 250,000 key differs
- Anti-corrosion finish

**Product Code:**  
**SS50S/G3**



Security Rating



### DCL1/J3

- 8mm diameter hardened alloy steel chain
- 900mm length chain
- Stainless steel padlock with anti-drill plate
- Hardened steel shackle
- 5 pin tumbler lock mechanism

**Product Code:**  
**DCL1/J3**



Security Rating

## Recommended for e-bikes



### Stronghold® SS50combi/G3

- 10mm diameter hardened boron alloy steel chain
- 900mm length chain
- 50mm solid hardened steel body padlock
- Combination mechanism, 100,000 possible combinations
- Anti-corrosion finish
- Patented lock

**Product Code:**  
**SS50combi/G3**

**9**

Security Rating



### Eiger Mini™/G3

- 10mm diameter hardened boron alloy steel chain
- 900mm length chain
- Hardened steel lock body
- Disc tumbler lock mechanism
- Anti-corrosion finish

**Product Code:**  
**EIGERMINI/G3**



**10**

Security Rating



### Stronghold® SS50CS/G4

- 10mm diameter hardened alloy steel chain
- 1200mm length chain
- 50mm solid hardened steel body padlock with hardened boron steel shackle
- 6 pin tumbler anti-pick lock mechanism over 250,000 key differs
- Anti-corrosion finish

**Product Code:**  
**SS50CS/G4**



**10**

Security Rating



### WARRIOR™ MAX

- 10mm diameter hardened alloy steel chain
- 1200mm length chain
- 55mm armoured steel body padlock with hardened boron steel shackle
- 5 pin cylinder lock mechanism

**Product Code:**  
**WARRIOR MAX**



**10**  
Security Rating



### WARRIOR™ COMBI MAX

- 10mm diameter hardened alloy steel chain
- 1200mm length chain
- 55mm armoured steel body combination padlock with hardened boron steel shackle
- 4 wheels, 10,000 possible combinations - fully recodable

**Product Code:**  
**WARRIOR MAX COMBI**



**10**  
Security Rating

## Tip

Always lock your e-bike to a fixed security point.

Lock up your e-bike at home using a Squire wall or ground anchor

See page 38

# sport

This is our specialist range for the cycle sport enthusiast.

Includes our range topping Snaplok™, convenient, secure and lighter in weight than any other Sold Secure Silver D-lock. Designed for road bikes to mountain bikes.





# SNAPLOK™



## SNAPLOK™ 260 AND 210

- Available in two sizes
- Lighter in weight than any equivalent Sold Secure Silver D-lock
- Recommended for securing bicycles and scooters
- Patented TORQ DRIV technology
- Hardened boron alloy steel construction
- Recodable 100,000 combinations
- Bracket included
- Recoding and fitting instructions included
- Patented
- Lock dimensions at longest point 260mm for SNAPLOK260 and 210mm for SNAPLOK210

### Product Code:

**SNAPLOK260 and SNAPLOK210**

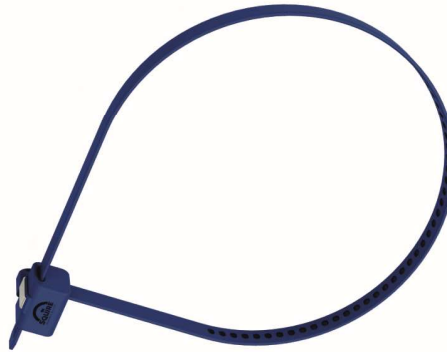


Security Rating



LIGHT WEIGHT

# cafelock 10



## Cafelock 10

- Length 450mm.
- Armoured stainless steel band
- Easy click, clip open and close Insert the key, press the button and pull the strap to open. Insert the key and push the strap into the lock head to close, tighten around the object as required and remove the key
- Patent applied for lock mechanism
- Versatile locks can also be used to secure bicycles to car bike racks, roof racks etc
- Also ideal for securing other items such as luggage, ladders outside the home, camping equipment etc.
- Designed to deter the opportunist thief

### Product Code:

**CAFELOCK 10**



Security Rating

# retrac



## RETRAC

Retractable, combination cable lock

- Ideal for temporary, short stay security
- Recodable 3 wheel combination
- Quick release
- Lightweight
- Easy to carry
- 600mm long cable
- Uses: helmets to bicycles, bicycles in transit inside vehicles, cycles to car cycle racks

### Product Code:

**RETRAC2**



Security Rating



# urban

Our higher security urban range designed for commuters, many are Sold Secure Approved.

Lock your bicycle at work or on the street with the assurance of these top rated products.

Combine with a second lock for extra security at stations or cycle shelters.



# FOLDA



Two new super-lightweight folding locks designed for the urban cyclist. Compact, convenient, easy to carry.

- Folding lock - available in 2 sizes, 850mm and 690mm lengths
- Extra compact, lightweight, easy to use and carry
- Comes with carrying bracket
- Hardened steel links
- Disc tumbler lock mechanism
- Security rating 6 and 7
- Squire's 10 year guarantee on all locks as standard.

## Folding locks



Carrying bracket



Folded



Open



### FOLDA FL850

- Compact, easy to carry, easy to use
- Hardened steel links
- Disc tumbler lock mechanism
- Lightweight, ways just 780g
- Carrying bracket included

**Product Code:**

**FOLDA FL850**

**7**

Security Rating



### FOLDA MINI FL690

- Extra compact, easy to carry, easy to use
- Hardened steel links
- Disc tumbler lock mechanism
- Lightweight, ways just 500g
- Carrying bracket included

**Product Code:**

**FOLDA MINI FL690**

**6**

Security Rating

# HAMMERHEAD™

## Features

- Available as combination or key operated
- Armoured steel lock bodies
- Easy to store and carry, carrying bracket included
- Squire's 10 year guarantee on all locks as standard
- Key operated - Sold Secure Gold. Five pin tumbler lock mechanism
- Combination version has 6 wheels, one million possible combinations. Sold Secure Silver
- Patented TORQ DRIV™ technology



# HAMMERHEAD™ D-locks



**HAMMERHEAD™ COMBI 290 and 230**  
Sold Secure D-lock

- Available in two sizes, 290mm shackle clearance and 230mm shackle clearance
- Recodable six wheel combination
- Hardened alloy steel shackle - 13mm
- Armoured steel lock body
- Combination version has 6 wheels, one million possible combinations
- Carrying bracket included
- Octagonal sleeve on shackle
- Patented TORQ DRIV™ technology

**Product Code:**

**HAMMEREAD COMBI 290**  
**HAMMEREAD COMBI 230**



**9**  
Security Rating



**HAMMERHEAD™ 290 and 230**  
Sold Secure D-lock

- Available in two sizes, 290mm shackle clearance and 230mm shackle clearance
- Hardened alloy steel shackle - 13mm
- Unique double locking mechanism, anti-pick, with keyhole dust cover
- Armoured steel lock body
- 5 pin tumbler locking mechanism, 1500 key differs
- Key operated, 2 keys provided
- Carrying bracket included
- Octagonal sleeve on shackle

**Product Code:**

**HAMMEREAD 290**  
**HAMMEREAD 230**



**10**  
Security Rating

## Tip

For commuters, always choose Sold Secure Approved locks. Especially where your bike is vulnerable, like cycle shelters or at stations.

For additional security, combine with a second lock.

# EIGER™

## Features

- Available in two sizes, EIGER™ and EIGER™ COMPACT
- Hardened steel shackles
- Armoured steel lock bodies
- Disc tumbler locking mechanism
- Sold Secure Gold Bicycle Approved
- Carrying brackets included



Secured by Design



Police Preferred Specification



## EIGER™ D-locks



**10**  
Security Rating



### EIGER™ Sold Secure D-lock

- Hardened alloy steel shackle - 13mm
- Armoured steel lock body
- Disc tumbler locking mechanism
- Two keys provided
- Eiger™shackle clearance 230mm
- Carrying bracket included
- Octagonal sleeve on shackle

**Product Code:**  
**EIGER**



**10**  
Security Rating



### EIGER™ COMPACT Sold Secure D-lock

- Hardened alloy steel shackle - 13mm
- Armoured steel lock body
- Disc tumbler locking mechanism
- Two keys provided
- Eiger™ Compact shackle clearance 145mm
- Carrying bracket included
- Octagonal sleeve on shackle

**Product Code:**  
**EIGER COMPACT**

## Locks with security cables



D-lock only

**10**  
Security Rating

D-lock only



### EIGER™ with 10C Cable Sold Secure D-lock with 1800mm cable

- Cable length 1800mm
- 10mm diameter cable
- 'D' lock security rating 10
- Note: Sold Secure rating applies to D-lock only

**Product Code:**  
**EIGER/10C**



D-lock only

**10**  
Security Rating

D-lock only



### HAMMERHEAD™ 290 with 10C Cable Sold Secure D-lock with 1800mm cable

- Cable length 1800mm
- 10mm diameter cable
- 'D' lock security rating 10
- Note: Sold Secure rating applies to D-lock only

**Product Code:**  
**HAMMERHEAD290/10C**

# MAKO

## Features

- Available as combination or key operated
- Security rating 9, Sold Secure Silver Approved and Secured by Design
- Octagonal cable design
- Combination version has 5 wheels, 100,000 possible combinations
- Easy to store and carry, all cable locks come with the universal MAKO carrying bracket
- Squire's 10 year guarantee on all locks as standard



## MAKO™ Cables



**MAKOCOMBI™ AD 25/1200**  
Armoured combination cable lock

- Hardened steel cups
- 5 wheels, 100,000 possible combinations
- Fully recodable
- Patented TORQ DRIV™ technology
- 25mm diameter
- 1200mm length
- Armoured steel lock body
- Includes universal carrying bracket

**Product Code:**  
**MAKOCOMBI AD25/1200**



**MAKO™** Armoured cable lock  
Sold Secure D-lock

- Hardened steel cups
- 5 pin tumbler lock mechanism
- Two keys provided
- 25mm diameter
- 1200mm length
- Armoured steel lock body
- Includes universal carrying bracket

**Product Code:**  
**MAKO AD25/1200**

## MAKO™ Chain



**MAKOCOMBI™ CN8/900 & CN8/600**  
Integrated combination lock and chain

- Integrated chainlock
- 5 wheels, 100,000 possible combinations
- Fully recodable
- Patented TORQ DRIV™ technology
- Hardened alloy steel chain 8mm diameter
- Available in two lengths 900mm and 600mm
- Armoured steel lock body

**Product Code:**  
**MAKOCOMBI CN8/900**  
**MAKOCOMBI CN8/600**



**MAKO™** CN8/900 & CN8/600  
Integrated lock and chain

- Hardened steel lock body
- 8mm diameter chain
- Available in two lengths 900mm and 600mm
- 5 pin tumbler lock mechanism
- Two keys provided
- Integrated lock and chain
- Hardened alloy steel chain

**Product Code:**  
**MAKO CN8/900**  
**MAKO CN8/600**



# FRAMELOCK

## Features

- High quality bicycle frame lock
- Easy to use, light in weight, easy to mount & carry
- High level of protection from theft
- Comes with a plug in chain to extend locks reach around fixed security points
- Squire's 10 year guarantee on all locks as standard.

AVAILABLE SOON



#### FRAMELOCK

- High quality frame lock
- Comes with 2 keys
- Steel body
- Hardened steel closing ring



#### EXTENDER CHAIN

- Hardened steel chain 8mm
- Length 140cm
- Chain plug diameter 14mm
- Anti-theft, use with a frame lock to lock the bike to a fixed point
- Strong textile sleeve cover to prevent paint damage

A woman with blonde hair, wearing a bright green cycling jersey and dark leggings with a green pattern, stands next to a purple road bicycle. She is smiling and holding a blue and black cycling helmet. The bicycle is parked on a cobblestone street next to a brick building with a grey door. The scene is set in an urban environment with green bollards and chains.

# leisure

Our everyday range of bike locks for all the family. Including easy to carry, larger cable locks to secure multiple bikes at once, and a great choice of lock and chain sets.

# MAKO

## Features

- Available as combination or key operated
- Security rating 7 (cables) and 8 (chains), Sold Secure Bronze Approved and Secured by design
- Octagonal cable design
- Combination version has 5 wheels, 100,000 possible combinations
- Easy to store and carry, all cable locks come with the universal MAKO carrying bracket
- Squire's 10 year guarantee on all locks as standard



## MAKO™ 25mm Cables



**MAKOCOMBI™ 25/1200**  
Combination cable lock

- 5 wheels, 100,000 possible combinations
- Fully recodable
- Patented TORQ DRIV™ technology
- 25mm diameter
- Length 1200mm
- Armoured steel lock body
- Octagonal cable design
- Includes universal carrying bracket



**7**  
Security Rating

**Product Code:**  
**MAKOCOMBI 25/1200**



**MAKO™ 25/1200**  
Key operated cable lock

- Hardened steel lock body
- 25mm diameter
- 1200mm length
- 5 pin tumbler lock mechanism
- Two keys provided
- Octagonal cable design
- Includes universal carrying bracket



**7**  
Security Rating

**Product Code:**  
**MAKO AD25/1200**

## MAKO™ 18mm Cables



**MAKOCOMBI™ 18/1800**  
**MAKOCOMBI™ 18/900**  
Combination cable lock

- 5 wheels, 100,000 possible combinations
- Fully recodable
- Patented TORQ DRIV™ technology
- 18mm diameter
- Available in two lengths, 1800mm and 900mm
- Armoured steel lock body
- Octagonal cable design
- Includes universal carrying bracket



**7**  
Security Rating

**Product Code:**  
**MAKOCOMBI 18/1800**  
**MAKOCOMBI 18/900**



**MAKO™ 18/1800**  
**MAKO™ 18/900**  
Key operated cable lock

- Hardened steel lock body
- 18mm diameter
- Available in two lengths 1800mm and 900mm
- 5 pin tumbler lock mechanism
- Two keys provided
- Octagonal cable design
- Includes universal carrying bracket



**7**  
Security Rating

**Product Code:**  
**MAKO 18/1800**  
**MAKO 18/900**



## MAKO™ Integrated chain

### MAKOCOMBI™ CN6/900 Integrated combination lock and chain

- 5 wheels, 100,000 possible combinations
- Fully recodable
- Patented TORQ DRIV™ technology
- Hardened alloy steel chain - 6mm diameter links
- Length 900mm
- Armoured steel lock body

**Product Code:**  
**MAKOCOMBI CN6/900**



**8**  
Security  
Rating

## Lock and chain sets

### CP50/36 Recodable combination padlock with 36 chain

- 6mm diameter hardened steel chain
- 50mm die cast body with dual compound cover
- Double locking with 10,000 possible combinations
- Fully recodable
- Patented padlock

**Product Code:**  
**CP50/36**



**7**  
Security  
Rating

### 35/36 Stronglock 35 padlock with 36 chain

- Hardened steel chain
- 5 mm diameter links
- 40-mm-steel-padlock with 4-pin-locking-mechanism
- Hardened steel-shackle

**Product Code:**  
**35/36**



**6**  
Security  
Rating

# KILDA

New for 2021

Our everyday bike locks range for fair weather rides or fun days out with the family

Premium quality, convenient, easy to use, lightweight and security rated

Simply great value



## KILDA Combination cable locks



4

Security Rating

### KILDA COMBI 12/1800 Combination cable lock

- 1800mm length
- 12mm diameter cable
- 4 wheels, 10,000 possible combinations
- Fully recodable
- Carrying bracket included

**Product Code:**  
**KILDACOMBI 12/1800**



3

Security Rating

### KILDA COMBI 10/600 Combination cable lock

- 600mm length
- 10mm diameter cable
- 4 wheels, 10,000 possible combinations
- Fully recodable
- Carrying bracket included

**Product Code:**  
**KILDACOMBI 10/600**



3

Security Rating

### KILDA COMBI 10/1800 Combination cable lock

- 1800mm length
- 10mm diameter cable
- 4 wheels, 10,000 possible combinations
- Fully recodable
- Carrying bracket included

**Product Code:**  
**KILDACOMBI 10/1800**



## KILDA Key operated cable locks



**5**  
Security  
Rating

**KILDA 15/1800**  
Cable lock

- 1800mm length
- 15mm diameter cable
- Disc tumbler lock mechanism
- Protective dust cover on keyway
- Comes with 3 keys
- Carrying bracket included

**Product Code:**  
**KILDA 15/1800**



**3**  
Security  
Rating

**KILDA 10/1800**  
Cable lock

- 1800mm length
- 10mm diameter cable
- Disc tumbler lock mechanism
- Protective dust cover on keyway
- Comes with 3 keys
- Carrying bracket included

**Product Code:**  
**KILDA 10/1800**



**4**  
Security  
Rating

**KILDA 12/1800**  
Cable lock

- 1800mm length
- 12mm diameter cable
- Disc tumbler lock mechanism
- Protective dust cover on keyway
- Comes with 3 keys
- Carrying bracket included

**Product Code:**  
**KILDA 12/1800**



**3**  
Security  
Rating

**KILDA 10/600**  
Cable lock

- 600mm length
- 10mm diameter cable
- Disc tumbler lock mechanism
- Protective dust cover on keyway
- Comes with 3 keys
- Carrying bracket included

**Product Code:**  
**KILDA 10/600**

## KILDA Integrated lock and chain sets



5

Security Rating

**KILDA COMBI CN6/900**  
Integrated combination lock and chain

- 900mm length
- 6mm diameter chain links
- Hardened steel chain
- 4 wheels, 10,000 possible combinations
- Fully recodable

**Product Code:**  
**KILDACOMBI CN6/900**



5

Security Rating

**KILDA CN6/900**  
Integrated lock and chain

- 900mm length
- 6mm diameter chain links
- Disc tumbler lock mechanism
- Protective dust cover on keyway
- Comes with 3 keys
- Carrying bracket included

**Product Code:**  
**KILDA CN6/900**



4

Security Rating

## Security cables

**12C** Security cable

- 1800mm length
- 12mm diameter cable
- Multi-strand cable
- Recommended for use with a suitable Squire D-lock or padlock

**Product Code:**  
**12C**



3

Security Rating

**10C** Security cable

- 1800mm length
- 10mm diameter cable
- Multi-strand cable
- Recommended for use with a suitable Squire D-lock or padlock

**Product Code:**  
**10C**

# home

## Secure your bike at home, in sheds and garages

Security 'at home' has never been more important.

More bikes are out and about than ever, and cycle theft is on the increase.

Most cycle thefts happen around the home, in a shed, a garage or the street outside.

We offer a wide range of 'at home' security from ground and wall anchors, garage security devices, high security hasp and lock sets to our innovative CombiBolt, designed to replace a conventional hasp and staple.

And for high value bikes, we offer a range of top rated Sold Secure products.

Most products are made in Britain. Squire's 10-year guarantee on all locks as standard.



## Ground anchors



**10+**  
Security Rating



### GA6 Ground anchor

- For use indoors and outdoors
- Sold Secure Diamond Motorcycle Approved
- Single bridge anchor
- Fully case hardened product to RC 60 spec. Solid construction
- Supplied with four security fixing bolts, steel ball inserts
- Blue powder coated finish
- Fits chains up to 22mm

#### Product Code:

**GA6**



**10**  
Security Rating



### GA7 Ground anchor

- For use indoors and outdoors
- Sold Secure Gold Motorcycle and Sold Secure Diamond Bicycle Approved
- Single bridge anchor
- Fully case hardened product to RC 60 spec. Solid construction
- Supplied with four security fixing bolts, steel ball inserts
- Blue powder coated finish
- Fits chains up to 19mm

#### Product Code:

**GA7**

## Wall anchors



**8**  
Security Rating

### WA500 Wall anchor

- For use indoors and outdoors
- Secure items in sheds and garages
- Can be used in brick and concrete
- Can be used as a ground anchor or a wall anchor
- Hardened steel 5mm construction
- Powder coated
- Supplied with security fittings
- Best for SQUIRE chains up to 10mm

#### Product Code

**WA500**



**5**  
Security Rating

### WA300 Wall anchor

- For use indoors and outdoors
- Secure items in sheds and garages
- Can be used in brick and concrete
- Can be used as a ground anchor or a wall anchor
- Hardened steel 5mm construction
- Powder coated
- Supplied with security fittings
- Best for SQUIRE chains up to 8mm

#### Product Code:

**WA300**

## Garage security



**GA5** Garage Door Protector  
Suitable for use on up and over garage doors

- Extra security for up and over garage doors
- Sold Secure Domestic Bronze Approved and Secured by Design
- High security hardened steel construction
- 5 pin tumbler lock mechanism
- Surface mounted, all in one, integrated product
- Tilt action arm locks into place to prevent garage door from being opened
- Supplied with all fixings
- Once opened, drive straight over, no removal needed

**Product Code: GA5**



**10**  
Security Rating



**GA4** Garage security

- Unit locks onto a solid steel base with padlock
- Sold Secure Domestic Bronze Approved and Secured by Design
- Fitting for concrete base as standard
- Simple ground fitting in front of garage door with expandable security raw bolts included
- Black powder coated finish
- Heavy construction
- Full fitting instructions included

**Product Code: GA4**



**10**  
Security Rating

## Locking bolts

**Combi-Bolt®4**

Unique recodable locking bolt



**4**  
Security Rating

- Die cast lock body
- Steel bolt
- Recodable CombiBolt4 has 4 wheels giving 10,000 combinations
- No keys to Lose
- One handed operation
- Security screws included in pack
- High pick resistance
- Patented
- Replaces a padlock and hasp & staple

**Product Code: COMBIBOLT4**

**KEYBOLT™**

Weatherproof locking bolt



**5**  
Security Rating

- Steel lock body and bolt encased in a weatherproof cover
- Steel components
- 4 Lever lock mechanism
- Lever lock mechanism gives excellent reliability outdoors
- Can be used in or outdoors

**Product Code: KEYBOLT**



## Lock and hasp sets



**SS50S/STH3**  
Stronghold® SS50S padlock with  
an STH3 hasp

### Hasp

- Hardened steel construction with anti-corrosion finish
- Hardened steel staple
- Nut and bolt fixing for added security
- Concealed fixings
- Sold Secure Silver Security Padlocks Fittings Approved
- Meets new building regulation requirement for out-buildings security

### Padlock

- Hardened boron alloy steel shackle
- Solid hardened steel lock body
- Electrophoretic anti-corrosion finish
- 6 pin cylinder - over 250,000 key differs
- Anti-drill protection
- Protective dust cover
- Sold Secure Gold Bicycle Approved
- Padlock is made in Britain

**Product Code:**  
**SS50S/STH3**



**10**

Security  
Rating



**CP50/No.6H**  
CP50 Recodable combination padlock  
with a No.6 hasp

### Hasp

- Hardened steel hasp and staple
- Hardened steel construction with anti-corrosion finish
- Coach bolt fixings for added security
- Concealed fixings
- Can be used on single or double doors

### Padlock

- Hardened steel shackle
- Double locking
- 4 Wheels 10,000 combinations
- Fully recodable
- Die cast alloy body cover
- Push button opening
- New patented design

**Product Code:**  
**CP50/No.6H**

**7**

Security  
Rating

SQUIRE  
**inigma**  
BL1

# CONNECT

TO THE TOUGHEST SMART SECURITY



[www.squirelocks.co.uk](http://www.squirelocks.co.uk)

Henry Squire & Sons Limited, Hilton Cross Business Park  
Cannock Road, Featherstone, Wolverhampton, WV10 7QZ

Tel: +44 (0)1902 308050

E-Mail: [info@henry-squire.co.uk](mailto:info@henry-squire.co.uk)

Europe Office  
Henry Squire & Sons Ltd  
Blaak 520, 3011TA Rotterdam, Holland